



## Feather Press

Haarslev Industries offers a proven feather press of a quality and sturdy construction that is adjusted in seconds. The press needs little maintenance. It offers an impressive payback to the customer in terms of energy savings (when rendering) or weight savings (when paying for removal of feathers) due to the large amount of water removed. Hundreds of presses have been installed successfully on all five continents!

The press is able to receive feathers plus their transport water directly from the slaughterhouse pumping system as well as after a normal feather separator.

### Design

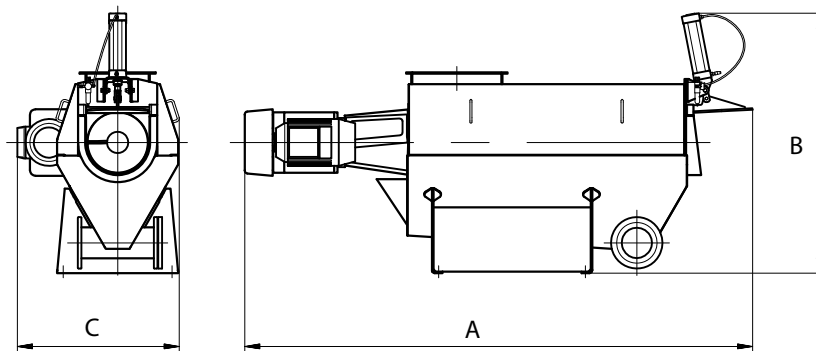
The press cage is built with stainless steel cage bars, which ensure even small feathers are captured, drained and pressed continuously. "Dry" feathers emerge through the front part of the machine whilst water collected and squeezed out of the feathers is drained through a sewage pipe located at the bottom. In absolute terms the press removes around 350 litres of water per 1,000 kg of wet feather that comes from the feather separator.

### Haarslev Industries

Haarslev Industries is one of the world's leading companies within handling and processing by-products from food related industries.

## Advantages

- Can receive feathers and water direct from a slaughterhouse pump system up to 60,000 l/h.
- Reduction in water content, arriving at 55% moisture in feathers at outlet achieving a high quality and stable product.
- No free water in bin or truck.
- Important reduction in the weight of the feathers
- Continuous operation unaffected by irregularities in the input.
- Can press chicken, duck and turkey feathers.
- High tolerance to foreign bodies in the feathers.
- Energy savings and minimising of environmental impact.



Technical Specifications	Unit	Type FP408W		Type FP550W	
		11 kW	15 kW	22 kW	
Capacity: Broilers (live weight)	kg/hr	< 24,000	< 30,000	< 48,000	
Capacity: Turkeys (live weight)	kg/hr	n/a	< 40,000	< 65,000	
Capacity: Wet broiler feathers*	kg/hr	< 3,150	< 3,900	< 6,200	
Capacity: Wet turkey feathers**	kg/hr	n/a	< 2,400	< 4,000	
Water flow	m <sup>3</sup>	60	60	120	
Weight	kg	1350	1400	2900	
Dimensions	A	mm	3810	3810	4200
	B	mm	1719	1719	2100
	C	mm	1063	1063	1200

(\*) Wet broiler feathers are estimated to max. 13% of live weight

(\*\*) Wet turkey feathers are estimated to max. 6% live weight

Above capacities are based on a feed of full water transport to the feather press from the feather pump.

We reserve the right to alter the specifications at any time without prior notice.



Haarslev Industries A/S • Bogensevej 85  
 DK-5471 Sønderso • Denmark  
 Telephone: +45 63 83 11 00  
 E-mail: info@haarslev.com  
 www.haarslev.com

