



## Feather Press

Haarslev Industries offers a proven feather press of a quality and sturdy construction that is adjusted in seconds. The press needs little maintenance and offers an impressive payback to the customer in terms of energy savings (when rendering) or weight savings (when paying for removal of feathers) due to the large amount of water removed. Hundreds of presses have been installed successfully on all 5 continents!

The press is able to receive feathers plus their transport water directly from the slaughterhouse pumping system as well as after a normal feather separator.

### Design

The press cage is built with stainless steel cage bars, which ensures even small feathers are captured, drained and pressed continuously. “Dry” feathers emerge through the front part of the machine whilst water collected and squeezed out of the feathers is drained through a sewage pipe located at the bottom.

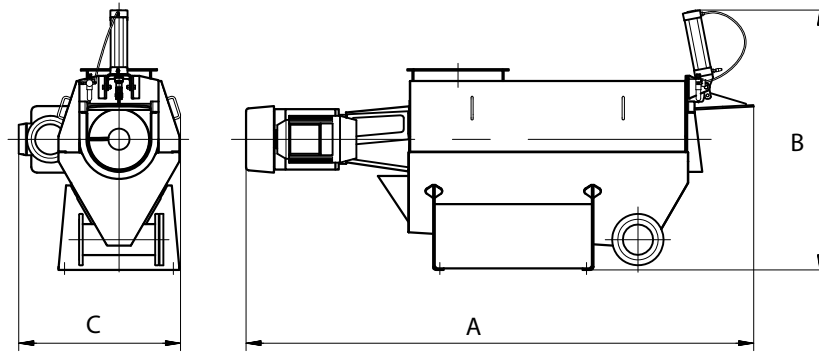
In absolute terms the press removes around 350 litres of water per 1,000 kg of wet feather that comes from the feather separator.

### Haarslev Industries

Haarslev Industries is one of the world’s leading companies within handling and processing by-products from food related industries.

## Advantages

- Can receive feathers and water direct from a slaughterhouse pump system up to 60,000 l/h.
- Reduction in water content, arriving at 55% moisture in feathers at outlet achieving a high quality and stable product.
- No free water in bin or truck.
- Important reduction in the weight of the feathers.
- One model suitable for various capacities.
- Continuous operation unaffected by irregularities in the input.
- Can press chicken, duck and turkey feathers.
- High tolerance to foreign bodies in the feathers.
- Energy savings and minimizing of environmental impact.



Technical Specifications	Unit	Type FP408W		Type FP550W
		15 HP	20 HP	29 HP
Capacity: Broilers (live weight)	lbs/hr	< 52,910	< 66,140	< 105,820
Capacity: Turkeys (live weight)	lbs/hr	n/a	< 88,185	< 143,300
Capacity: Wet broiler feathers*	lbs/hr	< 3,150	< 3,900	< 6,200
Capacity: Wet turkey feathers**	lbs/hr	n/a	< 2,400	< 4,000
Water flow	ft <sup>3</sup>	2118	2118	4236
Weight	lbs	2975	3086	6394
Dimensions	A	inch	150	150
	B	inch	68	68
	C	inch	42	42

(\*) Wet broiler feathers are estimated to max. 13% of live weight

(\*\*) Wet turkey feathers are estimated to max. 6% live weight

Above capacities are based on a feed of full water transport to the feather press from the feather pump.

We reserve the right to alter the specifications at any time without prior notice.



Haarslev Industries A/S • Bogensevej 85  
 DK-5471 Søndero • Denmark  
 Telephone: +45 63 83 11 00  
 E-mail: [info@haarslev.com](mailto:info@haarslev.com)  
[www.haarslev.com](http://www.haarslev.com)

