



## Unloading Pump 35/45

The Haarslev unloading pump is specially designed to unload medium and large vessels. The pump is designed to be suspended in a crane and lowered down into the fish holds.

The advantage of the Haarslev unloading pump is that it combines high efficiency with very limited damage to the fish.

The Haarslev unloading pump is manufactured in mild steel with replaceable wear parts in special wear resistant steel.

The Haarslev unloading pump features a compact design with a direct coupled high torque hydraulic motor unit.

The capacity of the HM45 unloading pump when pumping capelin is up to 330 tons/h, and up to 225 tons/h when pumping blue whiting.

### Features

When designing the hydraulic system, it is very important to keep a certain pressure in the return

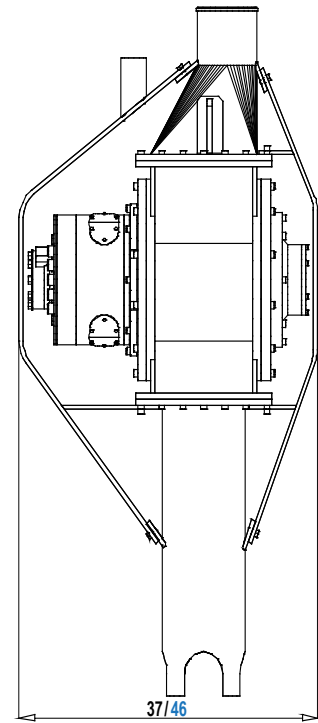
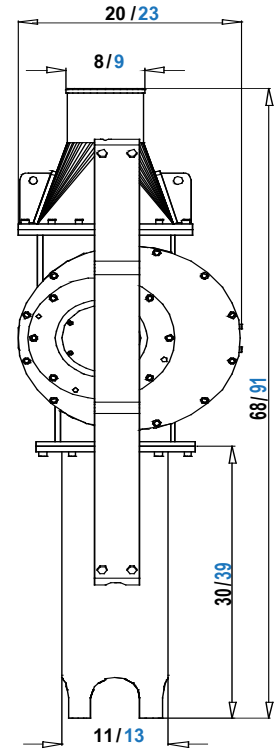
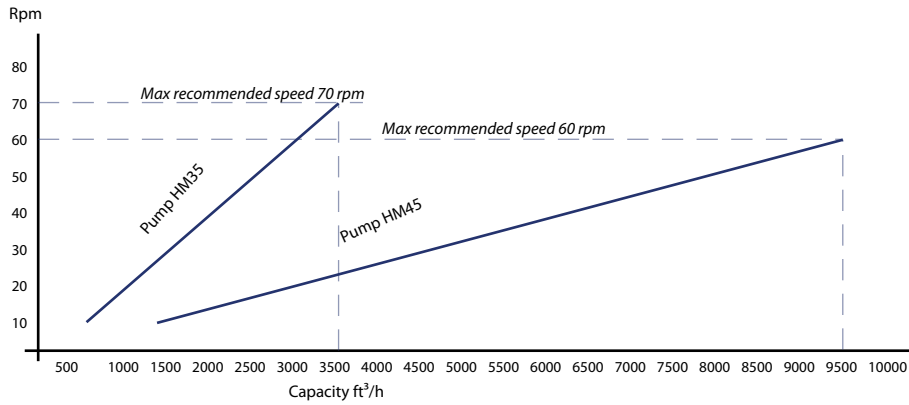
line, in order to prevent hydraulic problems.

A special blue whiting inlet is available as additional equipment.

### Haarslev Industries

Haarslev Industries is one of the world's leading companies within handling and processing of by-products from food-related industries.

# Theoretical Performance



Technical Specifications	Type/ Unit	HM35	HM45
Max theoretical capacity	ft³/h	3708	9535
Theoretical displacement	l/rev	845	2536
Max recommended speed	rpm	70	60
Particle handling	inch	3	5
Weight	lbs	2315	2976

We reserve the right to alter the specifications at any time without prior notice.



Haarslev Industries A/S • Bogensevej 85  
 DK-5471 Sonderso • Denmark  
 Telephone: +45 63 83 11 00  
 E-mail: info@haarslev.com  
 www.haarslev.com

